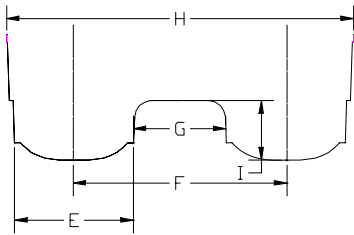
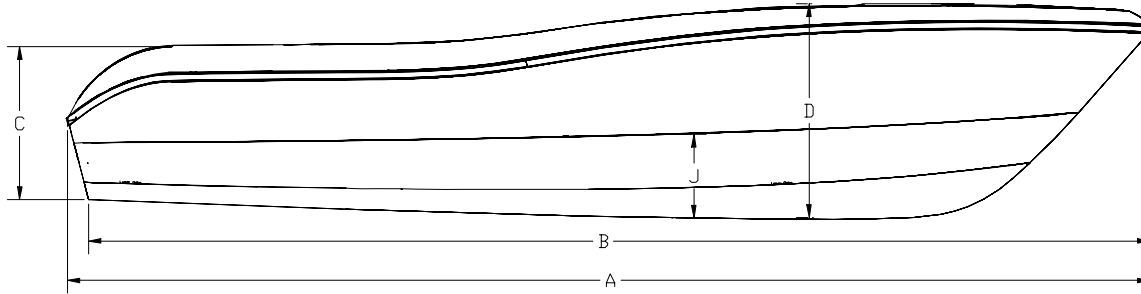


TRAILER DIMENSIONS (2015)



	255DC	270TE	295CC	295DC	320CC	320DC	320EC
A	24'-9 1/2"	26'-5 3/8"	29' 5/8"	29' 5/8"	32'-0 1/2"	32'-0 1/2"	32'-0 1/2"
B	24'-2 1/4"	25'-10 3/8"	28' 5"	28' 5"	31'-4 7/8"	31'-4 7/8"	31'-4 7/8"
C	4'-1 1/2"	4'-0 3/4"	4' 3"	4' 3"	4'-6 5/8"	4'-6 5/8"	4'-6 5/8"
D	5'-5 5/8"	5'-5 5/8"	5' 11"	5' 11"	6'- 3 5/8"	6'- 3 5/8"	6'- 3 5/8"
E	34 7/8"	34 7/8"	39 1/4"	39 1/4"	43 1/8"	43 1/8"	43 1/8"
F	59 5/8"	59 5/8"	67 1/2"	67 1/2"	76 1/4"	76 1/4"	76 1/4"
G	24 3/4"	24 3/4"	26 5/8"	26 5/8"	33 1/8"	33 1/8"	33 1/8"
H	99 1/8"	99 1/8"	115"	115"	125 1/4"	125 1/4"	125 1/4"
I	21 1/2"	20 1/2"	21 1/4"	21 1/4"	21"	21"	21"
J	29 3/8"	28 7/8"	28 1/2"	28 1/2"	28 3/4"	28 3/4"	28 3/4"
1	125"	N/A	123"	121"	122"	130 1/4"	130 1/4"
2	N/A	N/A	101"	101"	105 1/4"	108 5/8"	108 5/8"
3							192 5/8"
COG w/ Eng	105"	112"	TBD	115"	127"	146"	146"

	INCLUDES PULPIT. SUBTRACT 11 1/2" TO DETERMINE LENGTH TO PORT AND STBD STEM
I	DIMENSION TAKEN AT THE TRANSOM
J	DIMENSION TAKEN APPROXIMATELY 15' FROM THE TRANSOM
1	DIMENSION FROM KEEL TO HARDTOP TOP
2	DIMENSION FROM WATERLINE TO HARDTOP TOP
3	DIMENSION FROM WATERLINE TO UPPER STATION TOP

World Cat
Power Catamarans