

TEST CONDITIONS

Test Date	9/20/2022
Test Conductor	Travis Hayes
Boat Weight as Tested (lbs)	14702
Air Temperature (degrees F)	92
Elevation (ft)	0
Sea State	Calm
Wind Velocity range (mph)	2
Fresh/Salt Water	Brackish
Fuel Level at Testing (gal)	140

ENGINE SPECIFICATIONS

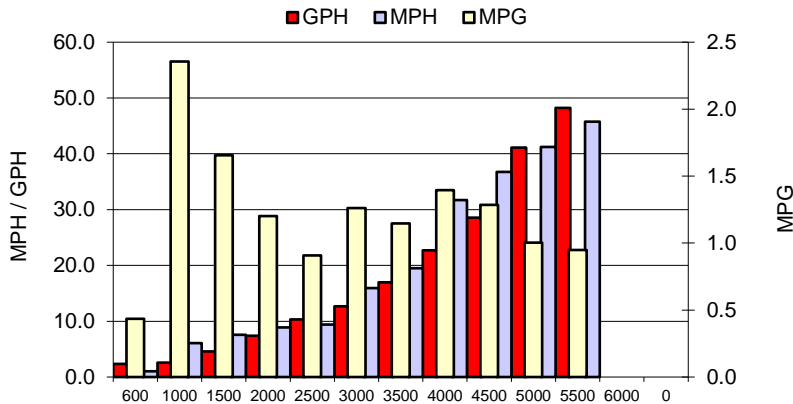
Number of Engines	2
Engine	V8 Verado
Horsepower	300
Cylinders	8
Drive or gear model and ratio	HD Camber 1.85
Mounting Bolt Hole	4,4
Engine Height (in)	1.8,1.8
Engine Setback (in)	14.0,14.0
Engine Length (in)	25,25

PERFORMANCE SUMMARY

Top Speed (mph @ rpm)	48.1	5742
Acceleration 0 - 20 mph (seconds)	5.54	
Acceleration 0 - 30 mph (seconds)	9.08	

PROPELLER SPECIFICATIONS

Mercury Name	Enertia ECO
Material	Stainless Steel
Pitch	18.0,18.0
Number of Blades	3

PERFORMANCE CURVE

BOAT SPECIFICATIONS

Region/s sold	
Manufacturer	World Cat
Website	
Boat Model	325 DC
Boat Type	Offshore Saltwater
Material	Fiberglass
Length (ft)	32.1
Beam (ft)	10.5
Max hp Capacity	600
Fuel Tank Capacity (gal)	279
Steering Type	Joystick
Dry Boat Weight (lbs)	12500

PERFORMANCE DATA

RPM	SPEED	FUEL CONSUMPTION	FUEL CONSUMPTION	RANGE
RANGE	MPH	GPH	MPG	MILES
600	1.0	2.3	0.4	121
1000	6.1	2.6	2.4	657
1500	7.6	4.6	1.7	462
2000	8.9	7.4	1.2	335
2500	9.4	10.3	0.9	254
3000	16.0	12.7	1.3	352
3500	19.5	17.0	1.1	320
4000	31.7	22.7	1.4	389
4500	36.7	28.6	1.3	359
5000	41.2	41.1	1.0	280
5500	45.8	48.2	0.9	265
6000	0.0	0.0	0.0	0
0	0.0	0.0	0.0	0
0	0.0	0.0	0.0	0