

**TEST CONDITIONS**

Test Date	7/28/2022
Test Conductor	Travis Hayes
Boat Weight as Tested (lbs)	7700
Air Temperature (degrees F)	101
Elevation (ft)	0
Sea State	Choppy
Wind Velocity range (mph)	15
Fresh/Salt Water	Brackish
Fuel Level at Testing (gal)	110

**ENGINE SPECIFICATIONS**

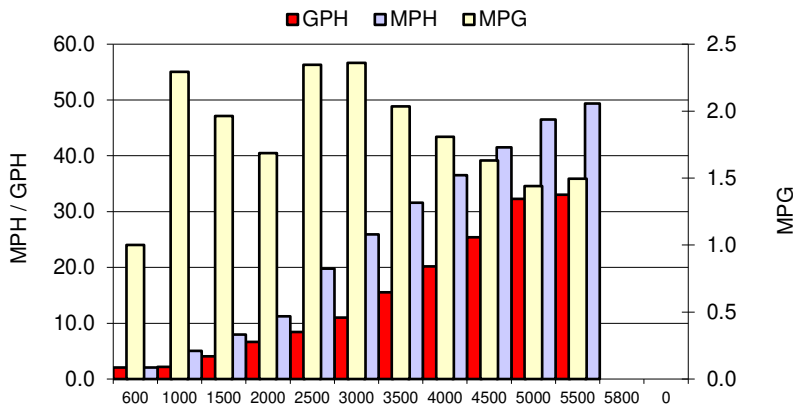
Number of Engines	2
Engine	V6 FourStroke
Horsepower	200
Cylinders	6
Drive or gear model and ratio	Standard 1.85
Mounting Bolt Hole	3,3
Engine Height (in)	1.0,0.0
Engine Setback (in)	9.0,9.0
Engine Length (in)	25,25

**PERFORMANCE SUMMARY**

Top Speed (mph @ rpm)	50.3	5665
Acceleration 0 - 20 mph (seconds)	5.64	
Acceleration 0 - 30 mph (seconds)	8.1	

**PROPELLER SPECIFICATIONS**

Mercury Name	Enertia ECO
Material	Stainless Steel
Pitch	18.0,18.0
Number of Blades	3

**PERFORMANCE CURVE**

**BOAT SPECIFICATIONS**

Region/s sold	
Manufacturer	World Cat
Website	
Boat Model	260 CC X
Boat Type	Offshore Saltwater
Material	Fiberglass
Length (ft)	25.5
Beam (ft)	9
Max hp Capacity	450
Fuel Tank Capacity (gal)	180
Steering Type	Steer-by-Wire
Dry Boat Weight (lbs)	6750

**PERFORMANCE DATA**

RPM	SPEED	FUEL CONSUMPTION	FUEL CONSUMPTION	RANGE
RANGE	MPH	GPH	MPG	MILES
600	2.1	2.1	1.0	180
1000	5.0	2.2	2.3	413
1500	8.0	4.1	2.0	354
2000	11.2	6.7	1.7	304
2500	19.8	8.4	2.3	422
3000	25.9	11.0	2.4	425
3500	31.6	15.5	2.0	366
4000	36.5	20.2	1.8	325
4500	41.5	25.4	1.6	294
5000	46.5	32.3	1.4	259
5500	49.4	33.0	1.5	269
5800	0.0	0.0	0.0	0
0	0.0	0.0	0.0	0
0	0.0	0.0	0.0	0