

TEST CONDITIONS

Test Date	6/5/2020
Test Conductor	
Boat Weight as Tested (lbs)	9000 aprox.
Air Temperature (degrees F)	82
Elevation (ft)	0
Sea State	Moderate
Wind Velocity range (mph)	15 to 20 mph
Fresh/Salt Water	Saltwater
Fuel Level at Testing (gal)	100 gal aprox

ENGINE SPECIFICATIONS

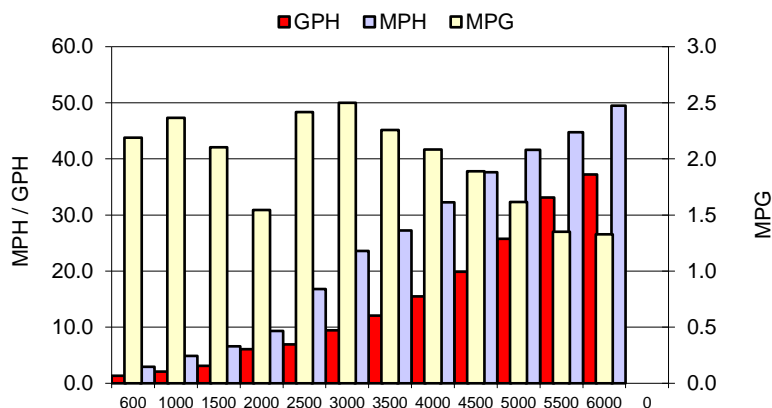
Number of Engines	2
Engine	Fourstroke V6
Horsepower	225
Cylinders	6
Drive or gear model and ratio	Standard 1.85
Mounting Bolt Hole	3,3
Engine Height (in)	1.5/1.5
Engine Setback (in)	13.0/13.0
Engine Length (in)	25/25

PERFORMANCE SUMMARY

Top Speed (mph @ rpm)	50.4	5976
Acceleration 0 - 20 mph (seconds)	4.18	
Acceleration 0 - 30 mph (seconds)	6.41	

PROPELLER SPECIFICATIONS

Mercury Name	Enertia ECO
Material	SS
Pitch	17
Number of Blades	3

PERFORMANCE CURVE

BOAT SPECIFICATIONS

Region/s sold	
Manufacturer	World Cat
Website	
Boat Model	280 CC-X
Boat Type	Offshore Saltwater Fish
Material	Fiberglass
Length (ft)	27.9
Beam (ft)	9.1
Max hp Capacity	400
Fuel Tank Capacity (gal)	220
Steering Type	Optimus Steer by wire
Dry Boat Weight (lbs)	7300

PERFORMANCE DATA

RPM	SPEED	FUEL CONSUMPTION	FUEL CONSUMPTION	RANGE
RANGE	MPH	GPH	MPG	MILES
600	2.9	1.3	2.2	481
1000	4.9	2.1	2.4	521
1500	6.6	3.1	2.1	462
2000	9.3	6.1	1.5	340
2500	16.8	6.9	2.4	532
3000	23.6	9.4	2.5	550
3500	27.2	12.1	2.3	497
4000	32.2	15.5	2.1	458
4500	37.6	19.9	1.9	416
5000	41.6	25.8	1.6	356
5500	44.8	33.1	1.4	297
6000	49.5	37.2	1.3	292
0	0.0	0.0	0.0	0
0	0.0	0.0	0.0	0